



Body Age & Actual Age Measurement



RELATED SDGS GOALS



SDGS 169 TARGETS

3.d Strengthen the capacity for health risk management

PRIMARY COUNTRY

Turkey

2 IMPACT ON SOCIETY

- Proactive approach for potential health problems
- Healty nutrition habits
- Sustainable, world class, proactive health management

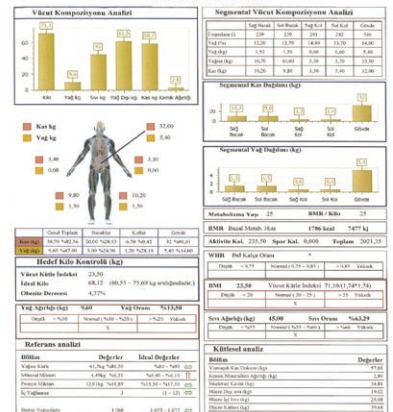
1 OUTLINE OF A PROJECT/ GOOD AND SERVICE

Conventional health care methodologies focus on healing illnesses in a reactive way. Instead of waiting for illnesses, we provide our employees a proactive well-being program based on body age measurement. In this methodology, "Body Age" is measured with Tanita device and compared vs. "Actual Age" of the employees. The results are used to determine relationship between nutrition habits and health conditions of employees such as obesity, metabolic syndrome and diabetics. We classify our employees as high risk-low risk and normal regarding the related figures. According to this classification, they are directed to our nutritionists to develop their spesific nutrition programs to improve or keep their situations with surveillance of doctors if needed.

MEASUREMENT



SAMPLE REPORT





Building a Secure Society by Utilizing Traffic Technology Innovation



RELATED SDGS GOALS



SDGS 169 TARGETS

3.6 Halve the number of global deaths & injuries from road traffic accidents
12.2 Achieve the sustainable management & efficient use of natural resources

PRIMARY COUNTRY

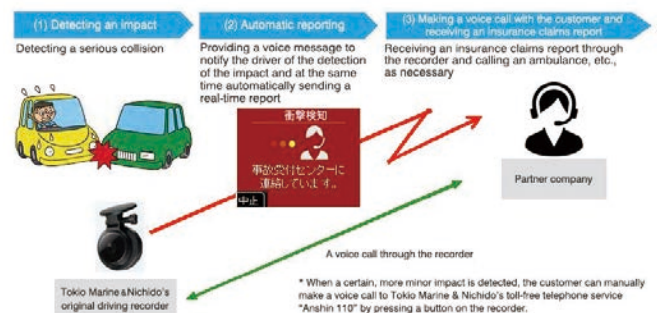
Japan

1 OUTLINE OF A PROJECT/ GOOD AND SERVICE

For the first time as a major insurance company in Japan, Tokio Marine Nichido provides a telematics service called the "Drive Agent Personal" in retail business since 2017 for delivering further safety and security. When the device detects a serious collision, it automatically sends an accident information report, and can dispatch an ambulance if the driver is seriously injured or not responding through the communication function, etc. It also provides services such as driving diagnosis reports and support for accident prevention.

2 IMPACT ON SOCIETY

Tokio Marine Nichido contributes to increasing society's preparedness against traffic risk and the prevention of traffic accidents by offering insurance products and services that quickly capture the latest innovation in traffic technology.



URL

https://www.tokiomarinehd.com/en/sustainability/theme1/traffic_safety.html



URL

https://www.tokiomarinehd.com/en/ir/library/annual_report/h10q7e00000013tj-att/20180830_e4.pdf





Establishment of Primary Health Care Clinics across four African countries.



RELATED SDGS GOALS



SDGS 169 TARGETS

3.4 By 2030, reduce by one third premature mortality from non-communicable diseases through prevention and treatment and promote mental health and wellbeing
 3.8 Achieve universal health coverage, including financial risk protection, access to quality essential health-care services and access to safe, effective, quality and affordable essential medicines and vaccines for all
 5.5 Ensure women's full and effective participation and equal opportunities for leadership at all levels of decision-making in political, economic and public life

PRIMARY COUNTRY

Sierra Leone, Liberia and South Sudan

OTHERS

Lybia

stretched public services. 95% of the staff are African and all management roles are performed by females.

2 IMPACT ON SOCIETY

Increase access to Primary Health services, including diagnostics and pathology, for all locals. Providing management and leadership opportunities for African women and children. Providing increased clinical standards for both health professionals and clinical delivery, through standards, forums and credentialing.



1 OUTLINE OF A PROJECT/ GOOD AND SERVICE

In 2014 Aspen Medical initially established a Primary Health Care Clinic (PHC) in Monrovia Liberia. Soon after Liberia (followed by Sierra Leone and Guinea) experienced the Ebola outbreak. To support the international response Aspen established 6 Ebola Treatment Centres (ETCs) across Liberia and Sierra Leone. Post the epidemic Aspen invested in PHCs in Sierra Leone and Liberia. Subsequently PHCs have been established in South Sudan and Libya. Clinics provide medical services to local and expatriate patients, reducing the burden on local over



Fight against Ebola in the Republic of Guinea



Guinean girl in the community assisted by Rusal.

RELATED SDGS GOALS



SDGS 169 TARGETS

- 3.3 End the epidemics of communicable diseases
- 3.b Support R&D of vaccines & medicines for the diseases in the developing countries
- 3.c Increase health financing & workforce in developing countries

PRIMARY COUNTRY

Guinea

OTHERS

RUSSIA

1 OUTLINE OF A PROJECT/ GOOD AND SERVICE

RUSAL has become the first company to implement a major construction project aimed at fighting Ebola. In 2015 RUSAL constructed the Centre for epidemic and microbiological research and treatment in Guinea - one of the most advanced healthcare institutions in West Africa. Testing programme of the Russian vaccine against Ebola conducted at the Centre (2016-2018) is intended to support international certification of the vaccine, allowing its use by the World Health Organisation to prevent the spread of Ebola. In pre-clinical and clinical studies, the GamEvac-Combi vaccine is said to have demonstrated a favourable safety profile.

2 IMPACT ON SOCIETY

2,000 participants administered with anti Ebola vaccine during the testing period (2016-2018). 62.5% of patients with a confirmed Ebola fever diagnosis have been successfully treated.



Guinean citizens receiving treatment.

URL

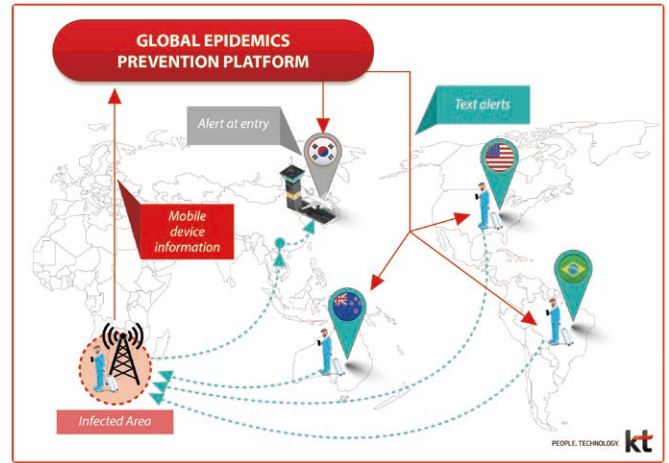
http://rusal.ru/upload/iblock/b93/RUSAL-Guinea-Ebola_upd.08.2017.pdf





GEPP

Global Epidemic Prevention Platform



RELATED SDGS GOALS



PRIMARY COUNTRY

Republic of Korea

OTHERS

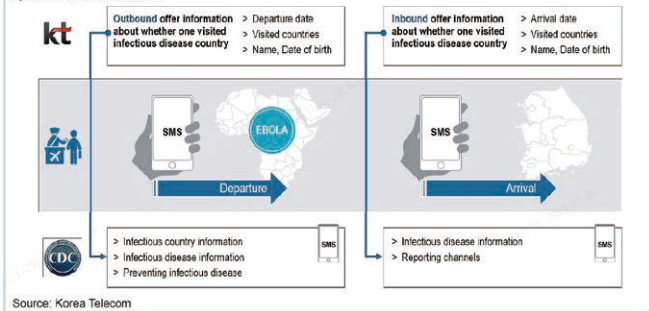
Global(Not limited to certain countries)

2 IMPACT ON SOCIETY

- Enhancing self-awareness by dramatic increase of self reporting cases
- Reducing national risk by real time monitoring system

Exhibit 27 | The Use of Big Data in Pandemic Preparedness and Reaction

Korea Telekom has started an initiative offering infectious disease Big Data to dedicated Centers for Disease Control. By collecting Telco's roaming information, Korea Telekom has built an effective information sharing system to its subscribers.



Source: Korea Telekom

1 OUTLINE OF A PROJECT/ GOOD AND SERVICE

As a representative Korean corporation, KT is taking the lead in providing new technologies and services based on 5G and understands the importance of ICT companies' impact on the society and environment. In 2016, KT launched the system that uses roaming Big Data to identify individuals who travel to an epidemic-affected-country. By sending SMS to the person who has been to an infected area, it has helped to enhance the self-awareness and reduce the riskiness of infectious disease. KT is expanding this successful achievements through global initiatives (WEF, ITU BCom) and now cooperating with several countries.(Ghana, Kenya, Laos and etc.)

URL

<https://corp.kt.com/eng/html/sustain/possibility/leadership.html>



URL

<https://www.broadbandcommission.org/Documents/publications/EpidemicPreparednessReport2018.pdf>



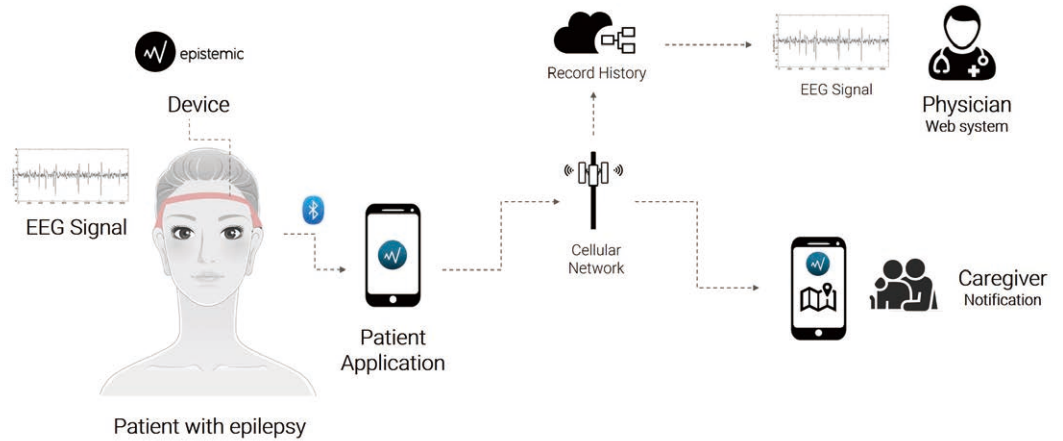
URL

https://www.b20germany.org/fileadmin/user_upload/B20_Germany_Policy_Paper_Health_Initiative.pdf





Prevision and alert device for epileptic seizures



RELATED SDGS GOALS



SDGS 169 TARGETS

3.4 Reduce mortality from non-communicable diseases

PRIMARY COUNTRY

Brazil

1 OUTLINE OF A PROJECT/ GOOD AND SERVICE

Epistemic is working to develop a device capable of predicting epileptic seizures with an average of 20 minutes in advance. The device will warn patients and caregivers of the incoming seizure. Epistemic built a seizure prediction software using non-linear dynamic systems theory and machine learning techniques on electroencephalogram signals. The proposed device is non-invasive and uses only 3 scalp electrodes. Epistemic is currently working on a miniaturized wearable electroencephalogram device to run the prediction software and enable warnings to happen on daily routines. The main objective is to give more autonomy and enhance quality of life of patients with epilepsy.

2 IMPACT ON SOCIETY

- Autonomy and empowerment of patients, less dependent on caregivers
- Safety enhancement with caution at right moments
- Diagnosis enhancement with 24 x 7 EEG information
- Economic impact due to accidents reduction and increase in patients enabled to work



URL

<http://www.epistemic.com.br/>





Provision of Primary Health Care services to Indigenous Australians living in remote communities (The Remote Area Health Corps)



RELATED SDGS GOALS



SDGS 169 TARGETS

3.4 By 2030, reduce by one third premature mortality from non-communicable diseases through prevention and treatment and promote mental health and wellbeing
 3.8 Achieve universal health coverage, including financial risk protection, access to quality essential health-care services and access to safe, effective, quality and affordable essential medicines and vaccines for all

PRIMARY COUNTRY

Remote Indigenous Communities (Australia)

OTHERS

nil

1 OUTLINE OF A PROJECT/ GOOD AND SERVICE

The Remote Area Health Corps (RAHC) was established in 2008 to address persistent challenges to accessing primary healthcare services for Aboriginal and Torres Strait people in the Northern Territory Australia. Aspen was contracted by the Australian Government to deliver these services. RAHC is a program designed to increase the pool of urban-based health professionals available for work in Indigenous communities by attracting, recruiting and orienting them and then providing ongoing support and training to successfully assist the

health professional to make the transition to remote practice. To date RAHC has placed just over 5,000 health professionals into these communities.

2 IMPACT ON SOCIETY

Access barriers to quality primary health removed for Indigenous Australians. Building trust between remote communities and Health Professionals.



Improved health outcomes assist in socioeconomic and education outcomes. Health system is managed more efficiently and is responsive to community.

URL

<https://www.rahc.com.au/about-us>



URL

<https://www.rahc.com.au/news/news/rahc-celebrates-decade-making-difference-northern-territory>



URL

<https://www.rahc.com.au/news/news/rahc-sends-its-5000th-urban-health-professional-northern-territory-assist-health-services>





Trauma and Maternity Hospitals Iraq (Mosul)

RELATED SDGS GOALS



SDGS 169 TARGETS

3.2 By 2030, end preventable deaths of newborns and children under 5 years of age, with all countries aiming to reduce neonatal mortality to at least as low as 12 per 1,000 live births and under-5 mortality to at least as low as 25 per 1,000 live births
3.c Substantially increase health financing and the recruitment, development, training and retention of the health workforce in developing countries, especially in least developed countries and small island developing States
9.1 Develop quality, reliable, sustainable and resilient infrastructure, including regional and transborder infrastructure, to support economic development and human well-being, with a focus on affordable and equitable access for all

PRIMARY COUNTRY

Iraq (Mosul)

1 OUTLINE OF A PROJECT/ GOOD AND SERVICE

The World Health Organisation (WHO) engaged Aspen Medical to manage, staff and operate three trauma and two maternity hospitals near Mosul, Iraq. Aspen was supported by clinicians from the Iraqi Ministry of Health (MoH). A key part of the project was to provide a clear exit strategy that would form the basis of a transition plan to the MoH. Aspen designed and delivered a training and transition plan to handover operational and clinical responsibility of each field hospital to the MoH (completed in 6-7 months). This also included recruiting Iraqi health professionals.

2 IMPACT ON SOCIETY

Aspen treated 48,000 severe casualties (a mortality rate of .02%) and delivered over 3,000 babies. Iraq clinicians, especially female health professionals, were encouraged to return to remote communities, where there was no health service. MOH now operates the facilities.



URL

<https://www.aspenmedical.com/news/news/aspen-medical-chosen-help-re-build-mosul%E2%80%99s-healthcare-system-part-global-humanitarian>



URL

<https://www.aspenmedical.com/news/news/aspen-medical-hands-over-final-hospital-iraqi-ministry-health>



URL

<https://www.canberratimes.com.au/national/act/aspen-medical-opens-third-trauma-hospital-in-wartorn-iraq-20171012-gyzc90.htm>





Women's health



New breast examination equipment in action.

RELATED SDGS GOALS



SDGS 169 TARGETS

3.7 Ensure universal access to sexual & reproductive health-care services
3.8 Achieve universal health coverage, including financial risk protection, access to quality essential health-care services and access to safe, effective, quality and affordable essential medicines and vaccines for all
3.d Strengthen the capacity for health risk management
3.c Increase health financing & workforce in developing countries

PRIMARY COUNTRY

Russia

1 OUTLINE OF A PROJECT/ GOOD AND SERVICE

The "Women's Health" program is aimed at creating an integrated system for early diagnosis and prevention of the incidence of breast cancer in the Belgorod and Kursk regions of Russia. The main target audience of the project is women over 30 years old. The program includes the creation of a unified system for



diagnosing breast cancer on the basis of city and regional medical institutions with the possibility of remote consultations, equipping with modern equipment and software, training radiologists, creating a psychological help desk, conducting an awareness campaign among the population.

2 IMPACT ON SOCIETY

- Early detection of breast cancer improved by 46%;
- Detection of breast cancer at 1 and 2 stages exceeded 77%;
- A system of standards for the diagnosis of breast cancer has been developed, with regular advanced training.

URL

<http://www.metalloinvest.com/sustainability/regional-development/womens-health/>



URL

<http://www.nwhcf.ru/blagotvoritelnye-programmy/profilaktika-i-rannaa-diagnostika>



URL

https://www.youtube.com/watch?v=tGNvDPOs_EY

